



Terreno rústico com vista sobre a serra em Vale Telheiro, Loulé
Rustic land overlooking the mountains in Vale Telheiro, Loulé

45.000 €

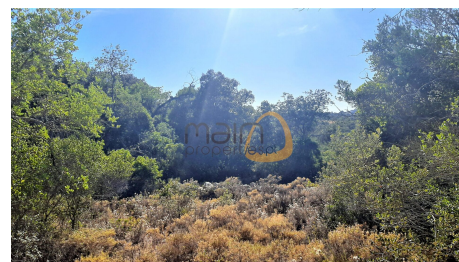
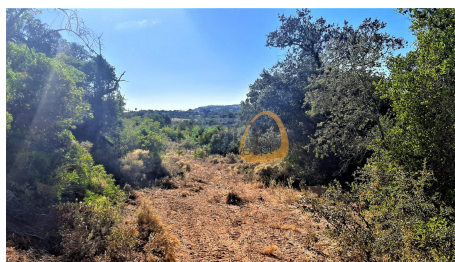
Ref.: MR129



22180



Not Applicable



Description

Large rustic land with a total area of 22.180 sqm and views over the mountains, situated on the outskirts of Loulé.

This land is composed of several trees characteristic of the [Algarve](#) region, such as carob trees.

Since it is a rustic land are not allowed buildings.

However, this land has numerous potentials.

As well as, creation of a shipyard, exploration of activities related to agriculture, ecology, recreational, among others.

If you prefer you can also purchase this land and monetize in one of the above activities.

The land has water and electricity nearby.

In addition, it has good access via tarmac road.

Located in Vale Telheiro, less than 4 km from the town of Loulé and 11 km from [Almancil](#).

Therefore, nearby you will have all the essential amenities and services.

Come visit!

MainProperties :: Rustic land overlooking the mountains in Vale Telheiro, Loulé :: MR129

Features

Land Access - Asphalt
Slope Type - Little Sharp
Country Views